

Extracts from Lopresor

6 Pharmaceutical Particulars Metoprolol tartrate is an aryloxypropanolamine derivative. It is a white, odourless or almost odourless, crystalline powder with a melting point of 120°C. It is very soluble in water, soluble in chloroform, methylene chloride and alcohol, and almost insoluble in benzene, diethylether and acetone.

6.1 List of Excipients See Section 2 Qualitative and Quantitative Composition.

6.2 Incompatibilities Incompatibilities were either not assessed or not identified as part of the registration of this medicine.

6.3 Shelf Life In Australia, information on the shelf life can be found on the public summary of the Australian Register of Therapeutic Goods (ARTG). The expiry date can be found on the packaging.

6.4 Special Precautions for Storage Store below 30°C. Protect from moisture. Keep out of reach of children.

6.5 Nature and Contents of Container Tablets 50 mg: bottle pack of 100's.

Tablets 100 mg: bottle pack of 60's.

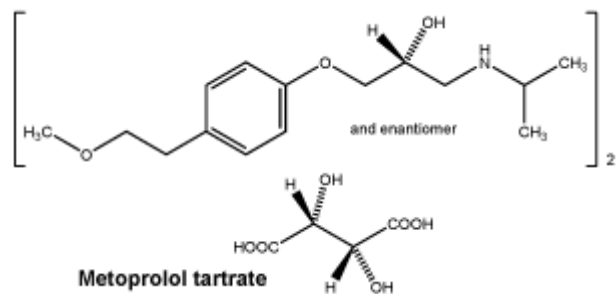
6.6 Special Precautions for Disposal In Australia, any unused medicine or waste material should be disposed of by taking to your local pharmacy.

6.7 Physicochemical Properties Chemical name: di-[(±)-1-(isopropylamino)-3 -[p-(2-methoxyethyl)phenoxy]-2 -propanol] l(+)-tartrate.

Molecular weight: 684.81.

Molecular formula: (C₁₅H₂₅NO₃)₂(C₄H₆O₆).

Chemical structure.



CAS number. 56392-17-7.