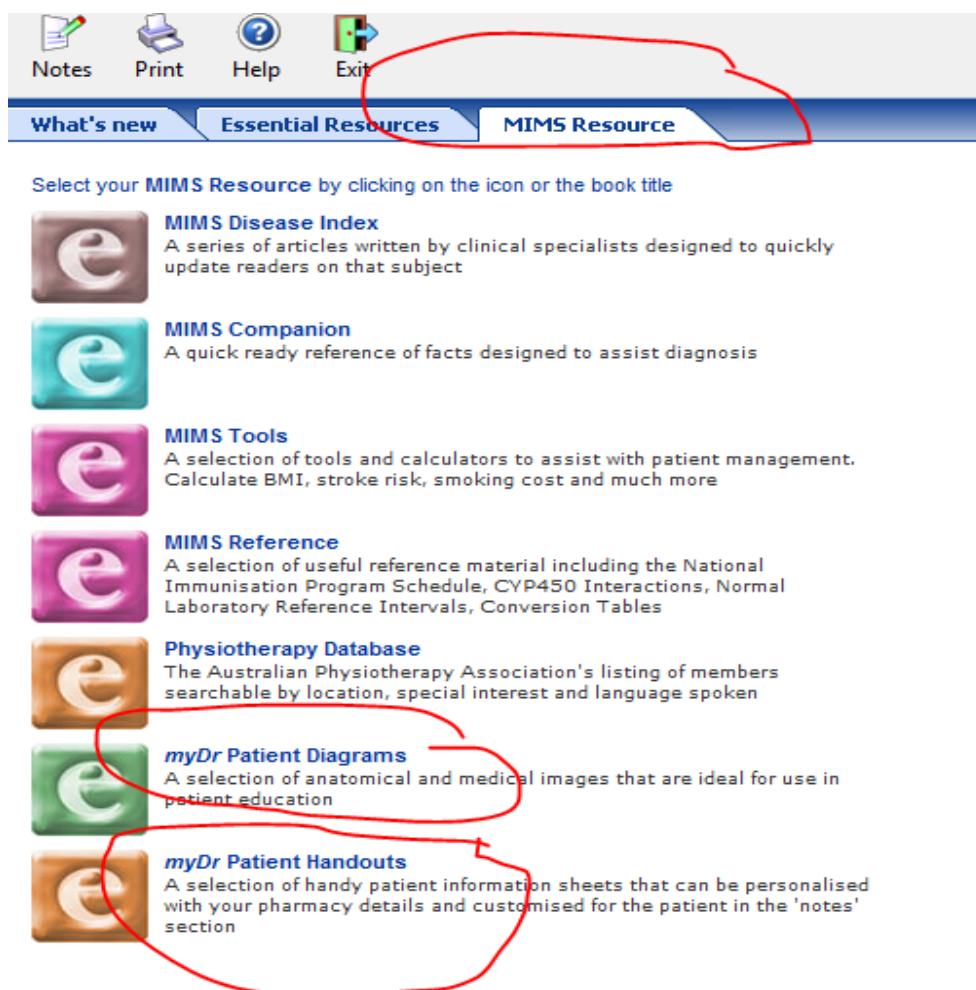


Patient Counselling Your Strength? eMIMS can support you in that

Using eMIMS to support the care of your patient is not just about keeping them safe by checking if any of their medications interact or that the dose is right. Nor is it just about providing them with a CMI they can take home to read.

eMIMS has so much other content you can access and use so let's take a look at where to find some of the most useful.



Your next step could be the myDr Patient Handouts

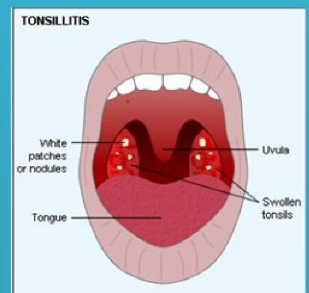
You can print these on to your own headed paper and use them for counseling as well as giving them to your patient to take home. Covering an array of common conditions these are a terrific resource for any healthcare professional. If you can't find the one you want in eMIMS you can always visit www.mydr.com.au our consumer website and search for it there.

First step is go to the **MIMS Resource Tab** – many of you will never have been here so consider this an adventure if you like.

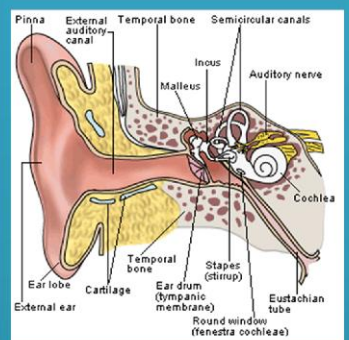
Why not check out each section?

Maybe start with *myDr Patient Diagrams* here you will find all sorts of interesting body bits you can use for counselling - think eyes, hearts and lungs.

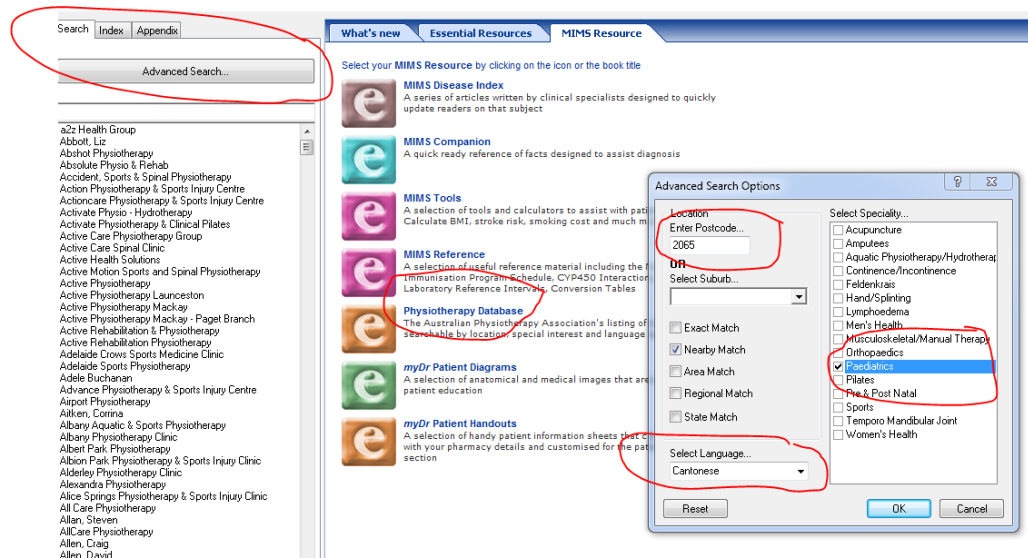
Tonsils useful?



What about an ear?



Imagine you have a patient with a young child who needs specialist physiotherapy care close to home – how do ensure they have someone working with them that is specialises in physiotherapy for children and speaks their language? It's so simple with eMIMS.



Just follow these simple steps and you've got it sorted!

- Click on MIMS Resources - again
- Click on Physiotherapy Database
- Click on Advanced Search and the pop up will do just that; pop up
- Add your criteria – e.g. postcode > speciality > language
- Hit OK
- The physio you are looking for will appear in the left hand column – click on a name and go right to their contact details
- Provide these to your patient
- Sorted